



PROVIDENCE

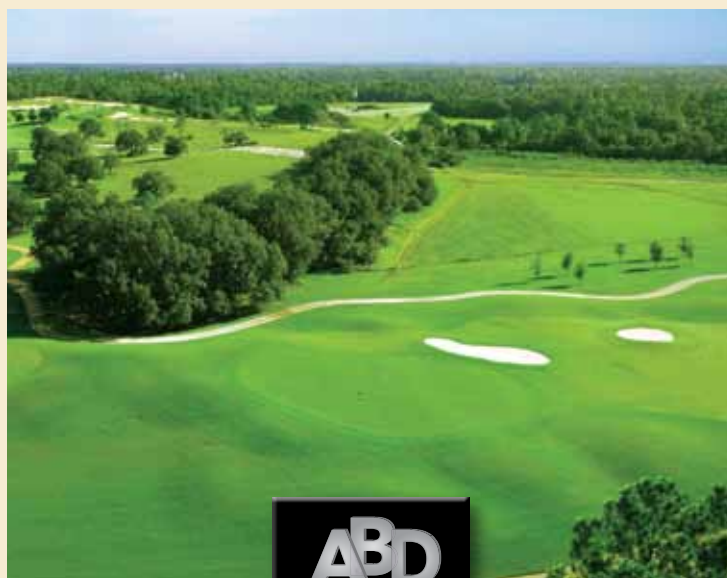
A Golf & Country Club Community



HERITAGE GREEN

EXECUTIVE & ESTATE HOMES

For More Information About Heritage Green Please Contact:



WELCOME TO HERITAGE GREEN AT PROVIDENCE.

Heritage Green is ABD's custom home community in Providence, offering Executive Homes and Estate Homes with 14 distinctive plans to choose from. Each one of our homes features ABD's high standard of quality with expert craftsmanship, architectural enhancements, custom touches throughout the interior with many designer details and finishes.

All homes offer open floor plans with gourmet kitchens, luxurious master suites and outdoor living space with home sites overlooking the champion golf course, ponds or lush conservation. This is your opportunity to build and customize the home of your dreams in Central Florida's most distinguished resort community.

Providence is a gated, golf and country club community located in the Central Florida countryside, with world-class amenities such as the Michael Dasher designed golf course, clubhouse and pro shop, a family aquatic center, fitness center, tennis courts and children's playground... all amongst 2,200 pristine acres of lakes, conservation and beautiful home sites.

SORRENTO



Executive Series

2,543 SF

3 Bedrooms

3 Baths

Covered Lanai

Courtyard Drive

2 Car Garage

WYNDHAM V



Executive Series

2,614 SF

4 Bedrooms

3 Baths

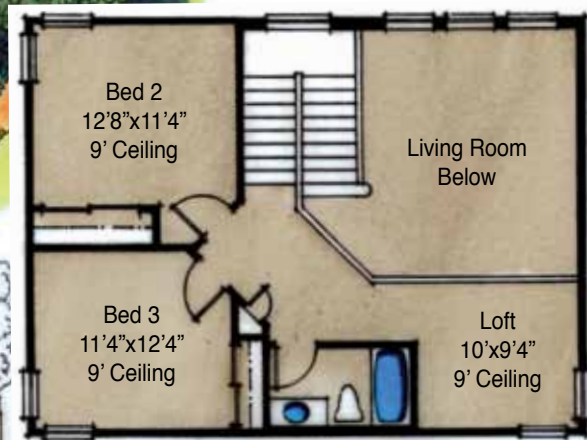
Covered Lanai

Courtyard Drive

2 Car Garage



COURTYARD II



Executive Series

2,684 SF
 3 Bedrooms
 3 1/2 Baths
 Covered Lanai
 Courtyard/Pool Area
 Guest Suite/Pool House
 2 Car Garage

PORTOFINO



Executive Series

2,749 SF

4 Bedrooms

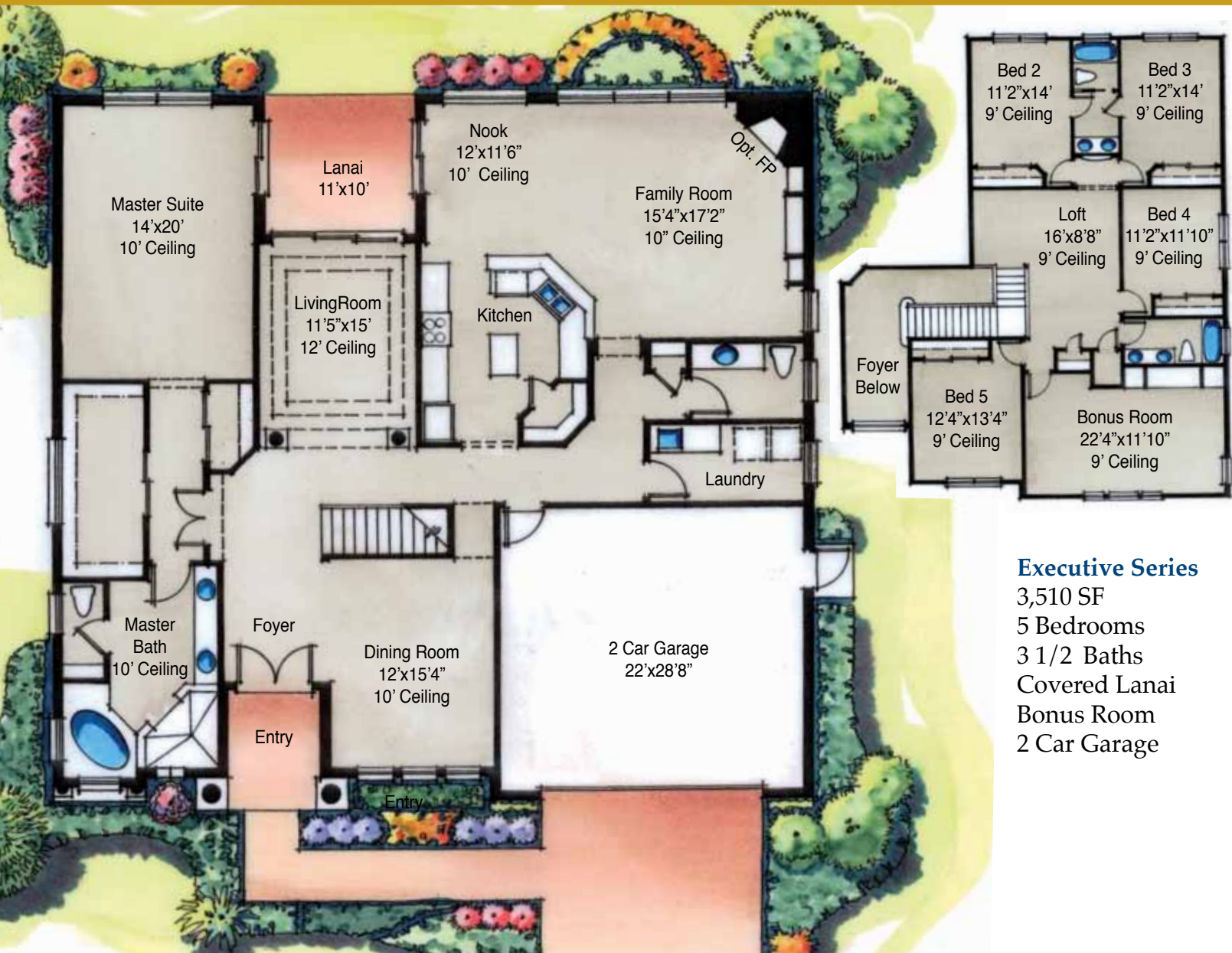
3 Baths

Covered Lanai

2 Car Garage



MANCHESTER II



Executive Series

3,510 SF

5 Bedrooms

3 1/2 Baths

Covered Lanai

Bonus Room

2 Car Garage

COURTYARD V



Estate Series

3,033 SF

3 Bedrooms

3 1/2 Baths

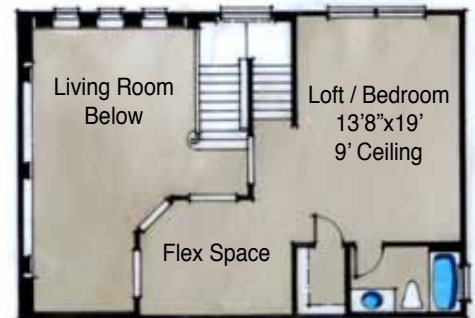
Covered Lanai

Courtyard/Pool Area

Guest Suite/Pool House

2 Car Garage

COURTYARD III



Estate Series

3,555 SF

3 Bedrooms

4 1/2 Baths

Covered Lanai

Courtyard / Pool Area

Guest Suite / Pool House

3 Car Garage

COURTYARD



Estate Series

4,207 SF

4 Bedrooms

4 1/2 Baths

Loft & Bonus Room

Covered Lanai

Courtyard/Pool Area

Guest Suite/Pool House

3 Car Garage

WYNDHAM III



Estate Series
3,323 SF
4 Bedrooms
4 Baths
Study
Covered Lanai
3 Car Garage

WYNDHAM IV



Estate Series

3,483 SF

4 Bedrooms

4 Baths

Study

Covered Lanai

Bonus Room

3 Car Garage

BRISTOL



Estate Series

3,962 SF

4 Bedrooms

3 Baths

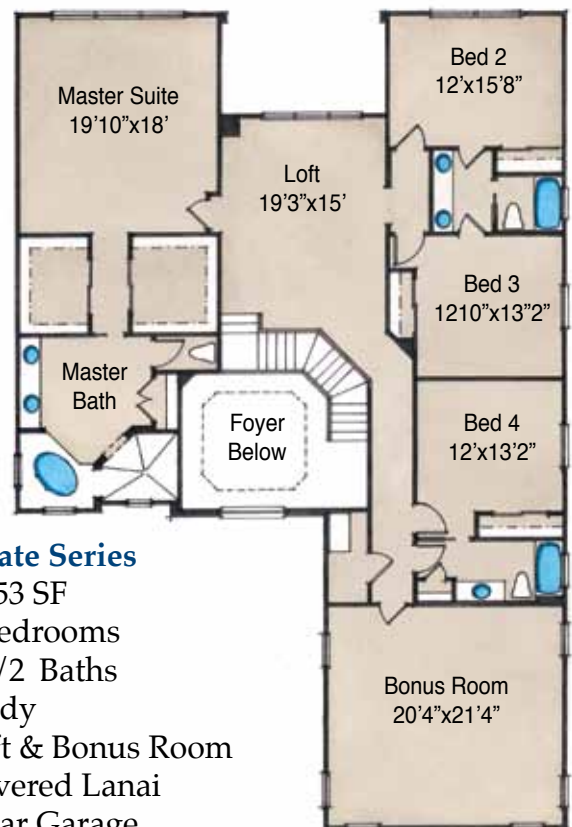
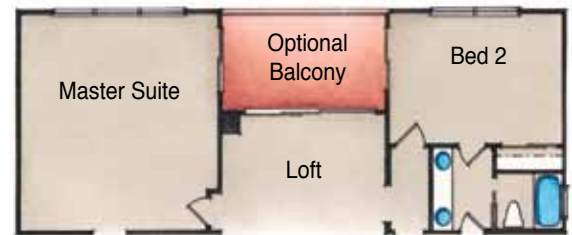
Study

Loft & Bonus Room

Covered Lanai

3 Car Garage

TUSCAN



Estate Series
 4,853 SF
 5 Bedrooms
 4 1/2 Baths
 Study
 Loft & Bonus Room
 Covered Lanai
 3 Car Garage

DEAUVILLE



Estate Series

- 4,905 SF
- 4 Bedrooms
- 4 Baths
- Study
- Loft & Game Room
- Covered Lanai
- 3 Car Garage

MANCHESTER



Estate Series

5,089 SF

4 Bedrooms

4 Baths

Study

Loft & Bonus Room

Covered Lanai

3 Car Garage

EXECUTIVE HOMES STANDARDS

Interior Features

- Dramatic volume ceilings (per plan) on ground floors with minimum 9'4" ceiling heights
- Attractive textured ceilings
- Rounded corners
- Entertainment center with built in drywall shelves
- Designer interior paint color, plus one accent color for niches
- Wood crafted window sills
- Crown molding in living and dining room
- Upgraded baseboards
- Panel masonite interior doors with lever door hardware in a choice of colors and styles
- Wire ventilated shelving throughout
- Prewired for telephone in all bedrooms, kitchen and bonus room
- Prewired for cable television in all bedrooms, family room, and bonus room
- Prewired for ceiling fans in all bedrooms, family room and lanai
- Security system
- Elegant ceramic tile in foyer, bathrooms, kitchen and laundry room
- Extensive selections of wall-to-wall carpeting
- 8' interior doors (first floor only)

Kitchen Features

- Spacious breakfast areas
- Kitchen pantry with wire shelving
- Extensive selections of cabinetry, including 42" upper cabinets
- Granite countertops (per ABD selection) with 4" backsplash and 16" raised high bar
- Stainless steel sink with pull out faucet
- Plumbing for icemaker line
- Stainless steel appliance package
- Dishwasher
- Microwave
- Range

Bath Features

- His and hers vanities in master bath (per plan) with granite countertops and under mount sinks
- Cultured marble vanity tops in secondary bathrooms
- Elegant ceramic tile flooring
- Large roman style tub in master bath
- Oversized ceramic tile shower in master bath
- Separate water closet in master bath
- Moen Monticello 8" chrome faucets in all baths

Exterior Features

- Paver driveway, walkway and entry
- Elegant residential design by nationally renowned architectural designers
- Superb architectural detailing
- Impressive eight foot entry door
- Spacious covered rear patio (per plan)
- Tiled roofs
- Designer wrought iron mailbox
- Extensive landscaping package including automatic sprinklers and St. Augustine sod
- Electric garage door opener with two remote controls
- Quality white aluminum framed windows
- 2 Exterior hose bibs

Construction Features

- Concrete block construction
- Plywood roof sheathing
- Energy saving climate controlled heat pump air conditioner(s)
- R-30 ceiling insulation
- Category 5 wiring

ABD Developments Customizing "Personal Touch" Features

Interior Design Services

- Four hours of consultation with an interior designer to assist with color selections, including exterior paint, roofing surface coordination and interior color choices

Customer Satisfaction Consultation

- Two scheduled meetings with a Construction Coordinator and a walk through upon completion for complete satisfaction
- Ten year warranty by Bonded Builders (or equivalent)
- An extensive list of additional custom options and upgrades are available, and we will gladly accommodate your personal custom design requirements. Please consult with your Sales Associate for more information about upgrade options.

For more information about standard features and available options, please contact your ABD sales associate. Illustrations are for representation purposes only. Actual elevations may vary.

All renderings and floor plans are conceptual in nature and may change without notice. All dimensions are approximate. Specifications, features and options may be modified without prior notice or obligation. Please consult your ABD Sales Consultant for details.
©Applied Building Developments, Inc.



ESTATE HOMES STANDARDS

Interior Features

- Dramatic volume ceilings (per plan) on ground floors with minimum 9'4" ceiling heights
- Attractive textured ceilings
- Rounded corners
- Entertainment center with built in drywall shelves
- Designer interior paint color, plus one accent color for niches
- Wood crafted window sills
- Crown molding in living, dining and master bedroom
- Upgraded baseboards
- Panel masonite interior doors with lever door hardware in a choice of colors and styles
- Standard closet system in master bedroom
- Wire ventilated shelving in secondary bedrooms
- Prewired for telephone in all bedrooms, kitchen and bonus room
- Prewired for cable television in all bedrooms, family room, and bonus room
- Prewired for ceiling fans in all bedrooms, family room and lanai
- Security system
- Surround sound pre-wire in family room
- Wood burning fireplace
- Elegant ceramic tile in foyer, bathrooms, kitchen and laundry room
- Extensive selections of wall-to-wall carpeting
- 8' interior doors (first floor only)

Kitchen Features

- Spacious breakfast areas
- Kitchen pantry with wood shelving
- Extensive selections of cabinetry, including 42" upper cabinets with crown molding
- Granite countertops (per ABD selection) with 4" backsplash and 16" raised high bar
- Backsplash allowance
- Stainless steel sink with pull out faucet
- Plumbing for icemaker line
- Stainless steel appliance package
 - Dishwasher
 - Built-in microwave/oven combo
 - Range with Ceran cooktop and hood

Bath Features

- His and hers vanities in master bath (per plan) with granite countertops and under mount sinks
- Cultured marble vanity tops in secondary bathrooms
- Elegant ceramic tile flooring
- Large roman style tub in master bath
- Oversized ceramic tile shower in master bath
- Separate water closet in master bath
- Beveled edge mirror stirps in master bath
- Moen Monticello 8" chrome faucets in all baths

Exterior Features

- Paver driveway, walkway and entry
- Elegant residential design by nationally renowned architectural designers
- Superb architectural detailing
- Impressive eight foot entry door
- Spacious covered rear patio (per plan)
- Tiled roofs
- Designer wrought iron mailbox
- Extensive landscaping package including automatic sprinklers and St. Augustine sod
- Electric garage door opener with two remote controls
- Quality white aluminum framed windows
- 3 Exterior hose bibs

Construction Features

- Concrete block construction
- Plywood roof sheathing
- Energy saving climate controlled heat pump air conditioner(s)
- R-30 ceiling insulation
- Category 5 wiring

ABD Developments Customizing "Personal Touch" Features

Interior Design Services

- Four hours of consultation with an interior designer to assist with color selections, including exterior paint, roofing surface coordination and interior color choices

Customer Satisfaction Consultation

- Two scheduled meetings with a Construction Coordinator and a walk through upon completion for complete satisfaction
- Ten year warranty by Bonded Builders (or equivalent)
- An extensive list of additional custom options and upgrades are available, and we will gladly accommodate your personal custom design requirements. Please consult with your Sales Associate for more information about upgrade options.

For more information about standard features and available options, please contact your ABD sales associate. Illustrations are for representation purposes only. Actual elevations may vary.

All renderings and floor plans are conceptual in nature and may change without notice. All dimensions are approximate. Specifications, features and options may be modified without prior notice or obligation. Please consult your ABD Sales Consultant for details.
©Applied Building Developments, Inc.



HERITAGE GREEN SITE MAP

